

urban nest\_c-b-a

A pilot project in Berlin Britz

dott. paolo conrad bercah,  
M ARCH (harvard)

**c-b-a** | *berlin*

[www.c-b-a.net](http://www.c-b-a.net)



## **urban nest\_c-b-a**

**Building type:** multi level residential condominium  
**Location:** berlin, Neukolln-Britz  
**Size:** 950 m2  
**Buildign heigt:** 18 meter  
**Client :** PH J 84 GmbH

**Architectural:** paolo conrad bercah, c-b-a, berlin  
**Structural:** Tobias Goetz, PIRMIN JUNG D  
**Job site supervision\_concrete:** Frank Luddecke, SML, berlin  
**Job site supervision\_timber:** Michael Sedlmeier, LIGNOALP

**Time frame:** April 2017-May 2018  
**Completion:** May 2018  
**Budget:** 2.100.000 EURO

**Building systems:** LIGNOALP, Bressanone  
**INSTALLATIONS:** BERGMEISTER, BRESSANONE  
**ACUSTIC:** Tobias Goetz, PIRMIN JUNG D  
**Acustica:** Tobias Goetz, PIRMIN JUNG D

**timber work:** LIGNOALP, Bressanone

## urban nest\_c-b-a

### urban nest

is the first, highly prefabricated five levels timber house built in Berlin. It was conceived and designed by

### paolo conrad bercah

c-b-a, context of bare architecture, Berlin

Engineered by

**Tobias Goëtz,**

PIRMIN JUNG DEUTSCHLAND

built by

**LIGNOALP,**

bressanone, Italy

The building footprint is 14.5m x 13m and is constructed in energy-efficient timber construction. It features a KfW-Effizienzhaus-55.

The staircase and the foundation slabs are the result of semi-prefabricated concrete elements, while timber technology construction is used in the main building.

The use of wood enables a high degree of prefabrication and thus precise assembly on site.

All timber construction work is carried out in accordance with construction planning, production planning for prefabrication or assembly planning and statics.

The building process consists of six stages:

1	building of pre-fabricated element	_04-06.2017
	digging and concrete foundation building	_04-06.2017
3	concrete staircase assembly	_08.2017
4	timber elements assembly	_09.2017
5	electrical and mechanical installation	_10.17-04.17
6	interior finishes	_01-05-18

timber elements were prefabricated in Bressanone, Italy in 44 working days and were later assembled on site in Berlin in 21 working days (from August 29 to September 26, 2017) by 2 specialized LIGNOALP workers helped by 2 Berlin-based local carpenter.

**urban nest\_c-b-a**

**STAGE 1**

elements are being fabricated in Brixen, Sud Tyrol.  
Production time: 8 weeks



urban nest\_c-b-a

**STAGE 2**

**digging activity and foundation building**

*April 2017-June 2018*



urban nest\_c-b-a

**STAGE 3**  
concrete staircase  
*July-August 2017*



urban nest\_c-b-a

**STAGE 4**

**timber wall-elements and floors assembly**

*September 2017*

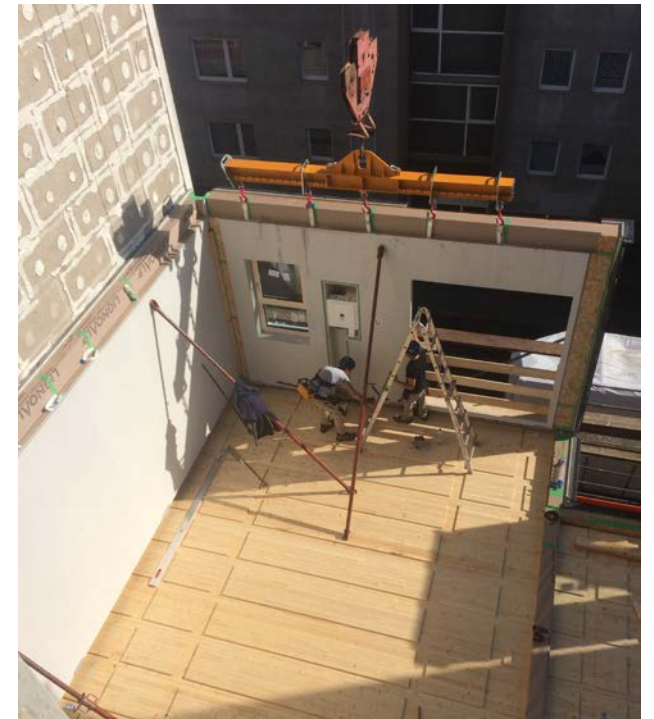
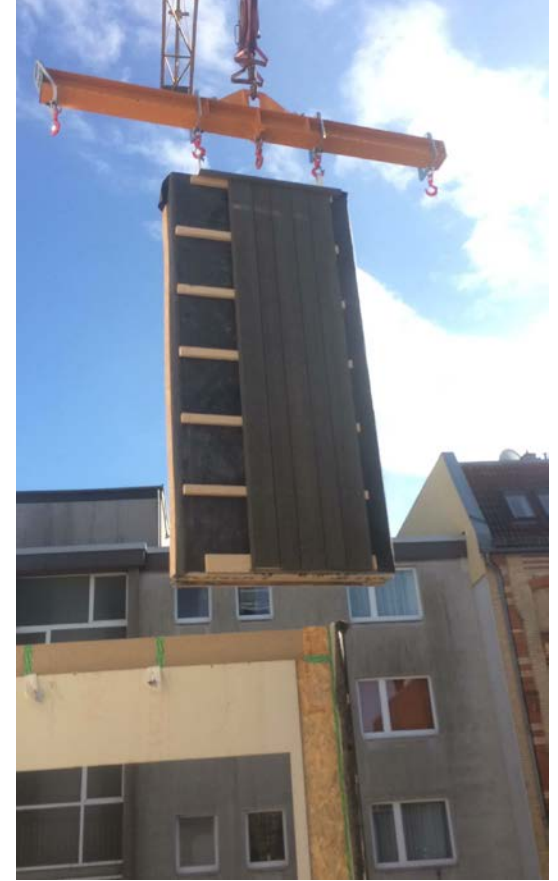
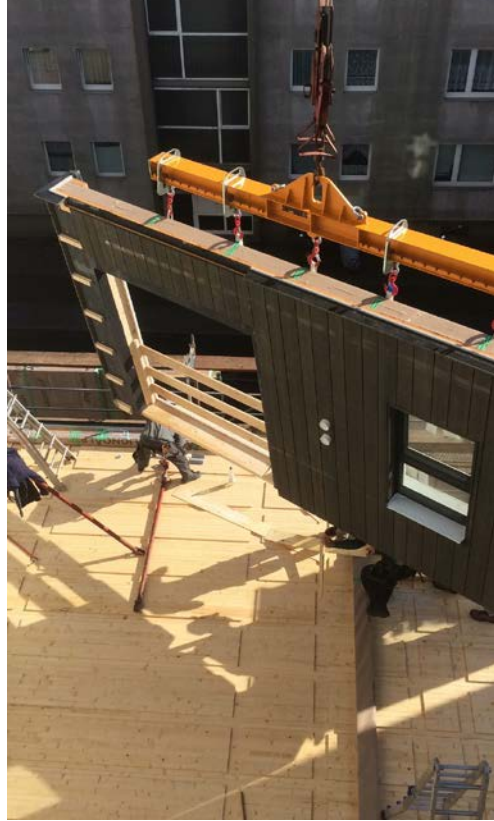


urban nest\_c-b-a





urban nest\_c-b-a



urban nest\_c-b-a

