

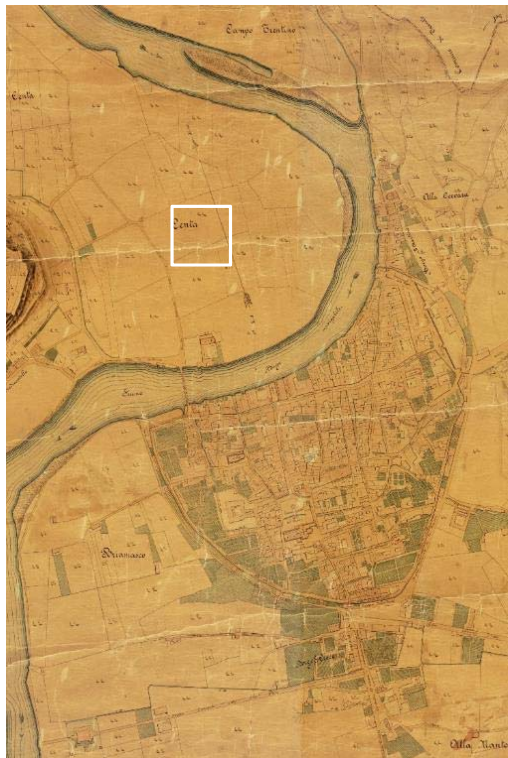
Modulo IV – Dalla teoria alla pratica
Sicurezza statica e progettazione antisismica nella
costruzione in legno

La residenza Universitaria Mayer - Trento

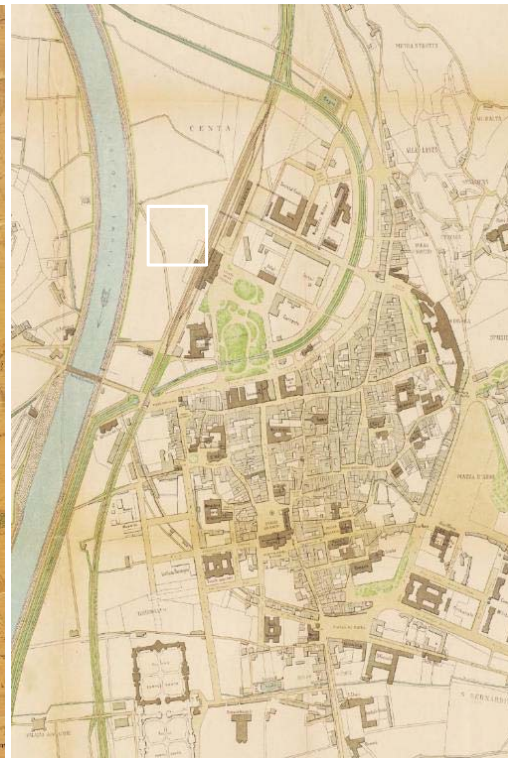
Il progetto tra architettura e struttura

Massimo Scartezzini, studio BBS, Trento





1813



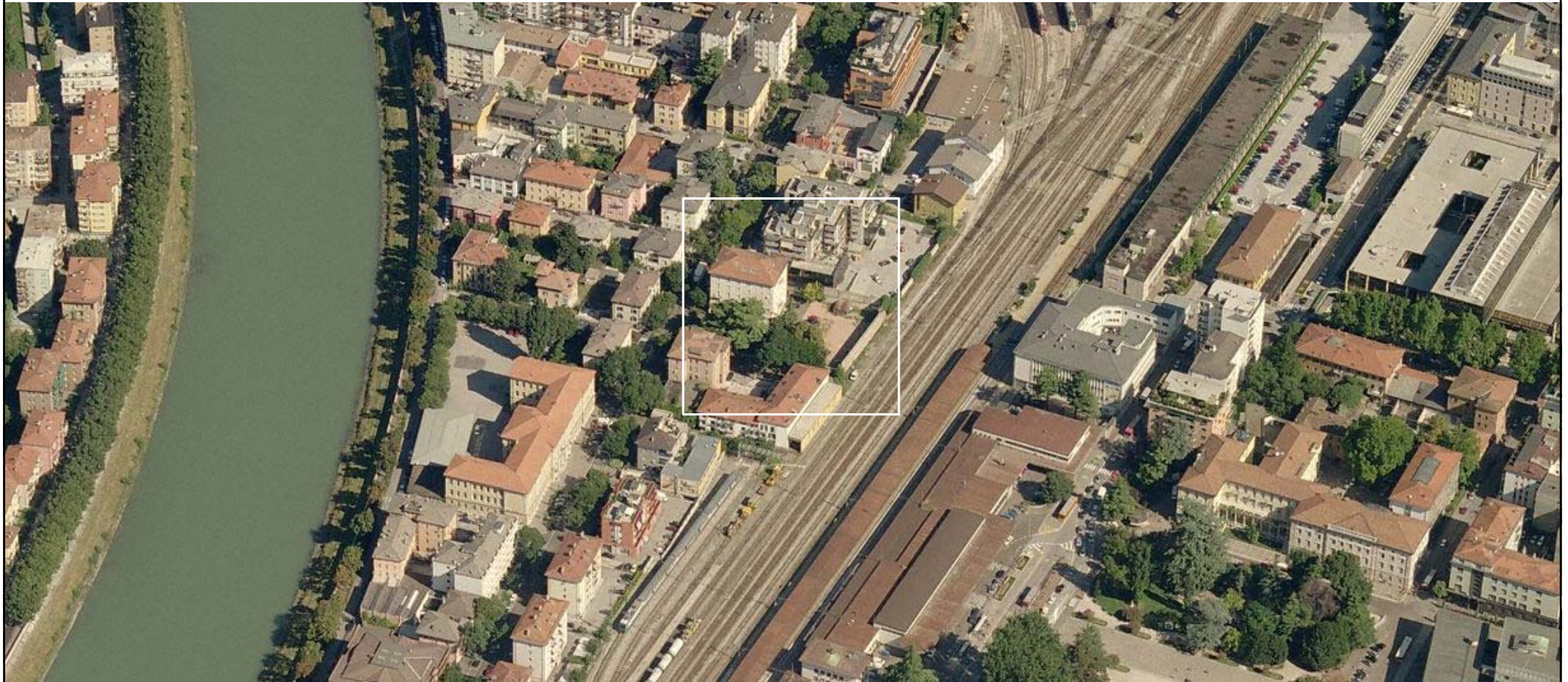
1891



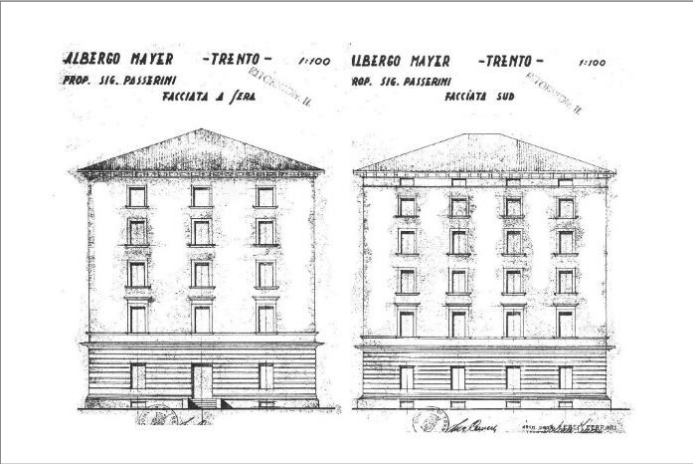
1922



2000



1906



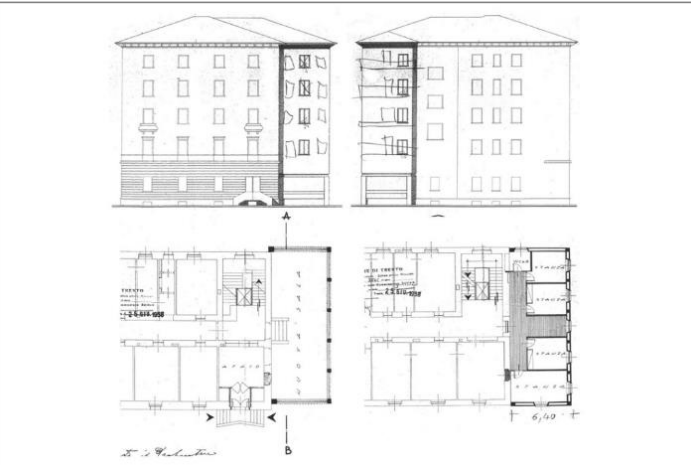
1910



1915



1943



1958



2008



8400 mc + 1200 mc = ~ 10.000 mc

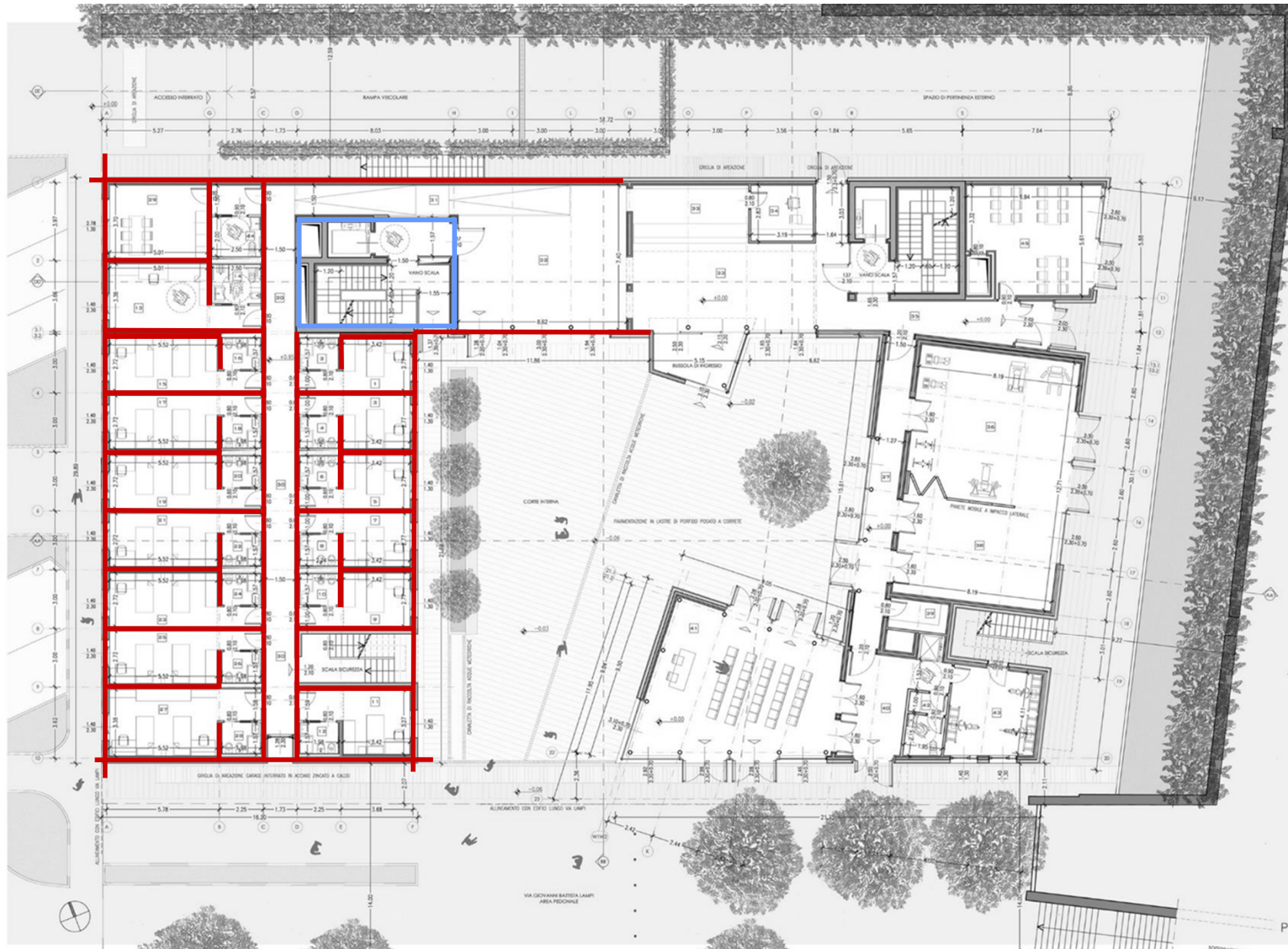
90%
riciclato

10%
a discarica



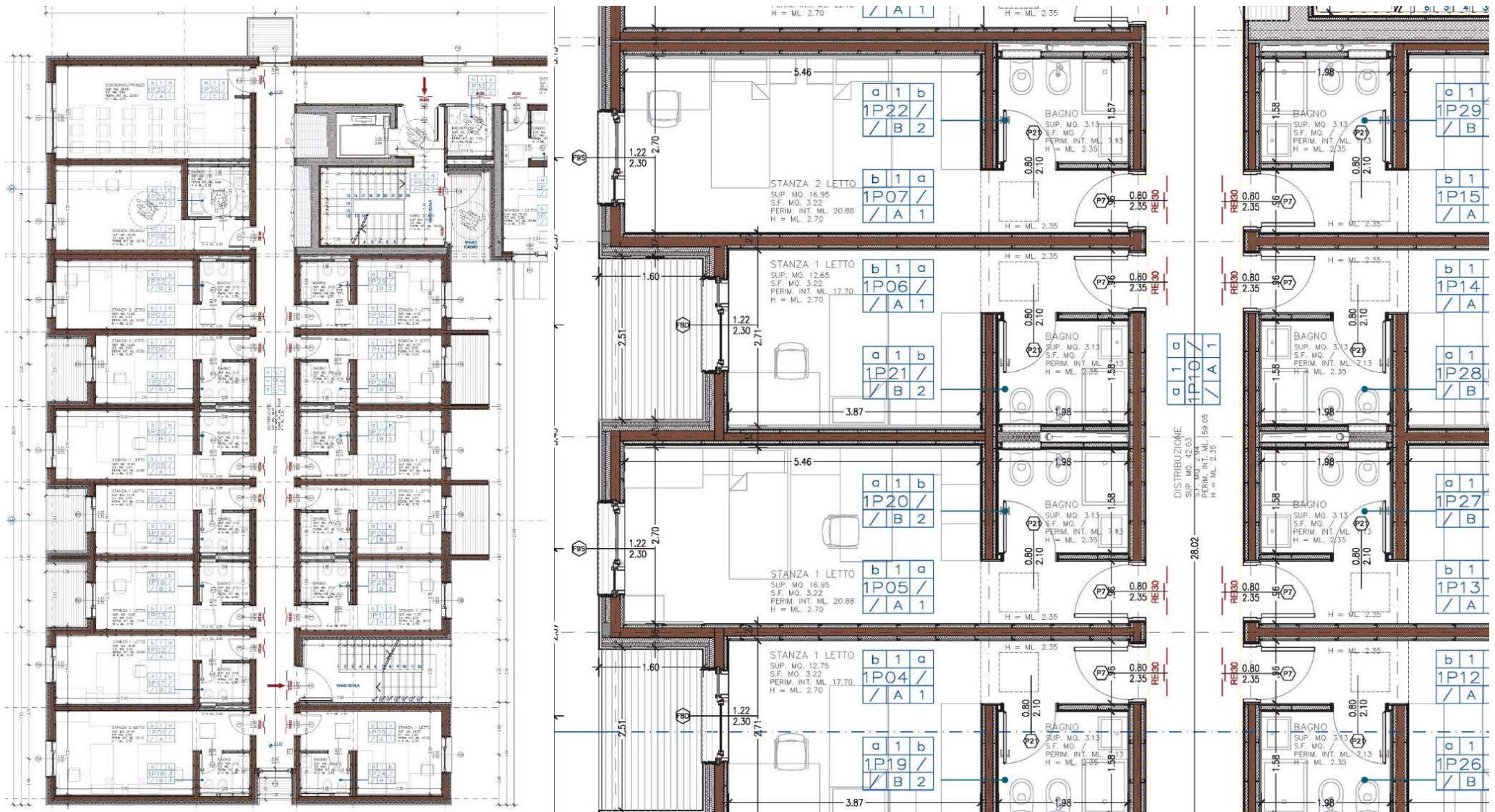






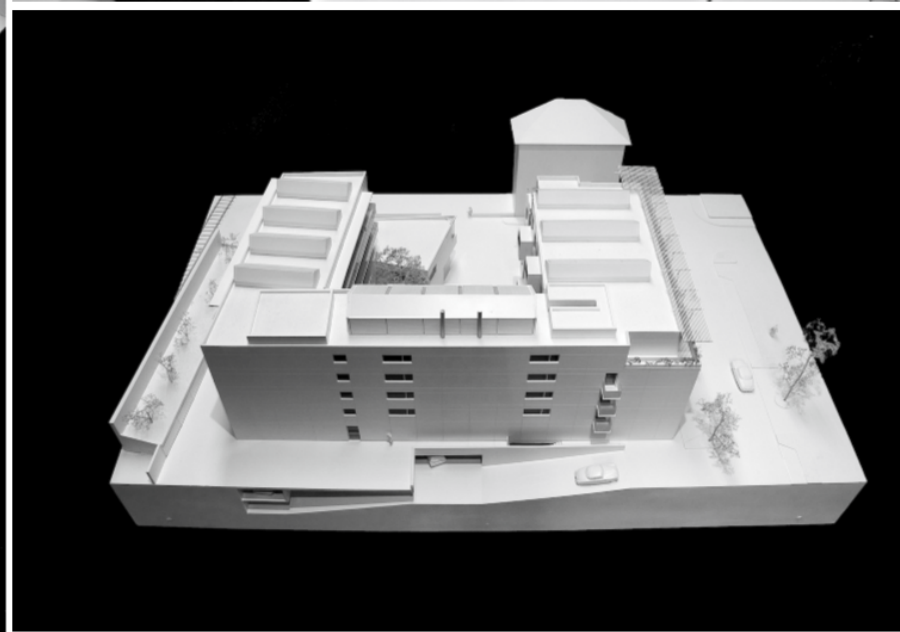
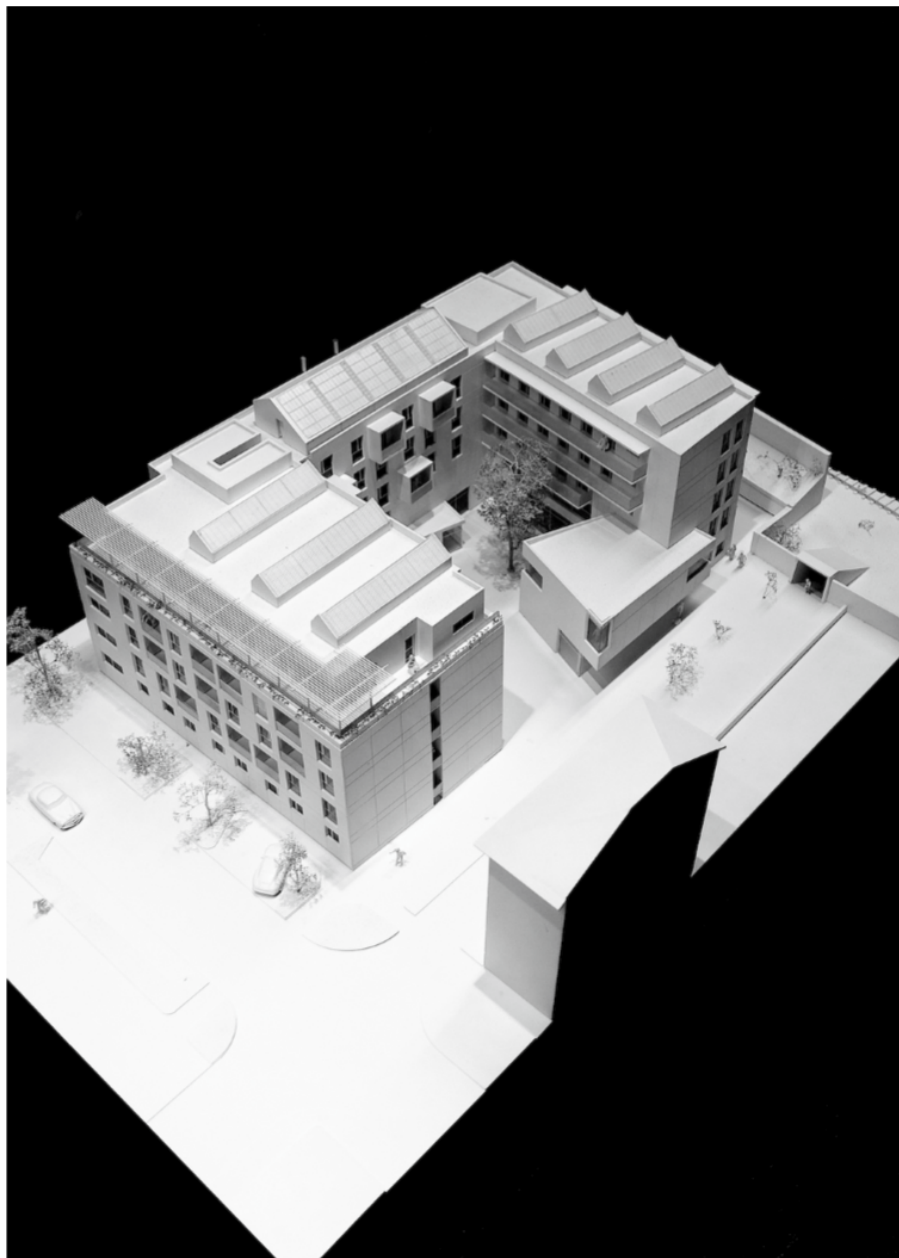














13.10.2011

OPERA UNIVERSITARIA
 PROVINCIA AUTONOMA DI TRENTO

COMUNE DI TRENTO PROVINCIA DI TRENTO

REALIZZAZIONE DELLA NUOVA RESIDENZA UNIVERSITARIA MAYER

ALLEGATO A3.0.1.A1: Tavola A1
 allegato al fascicolo A3 "Organizzazione nello svolgimento dei lavori"

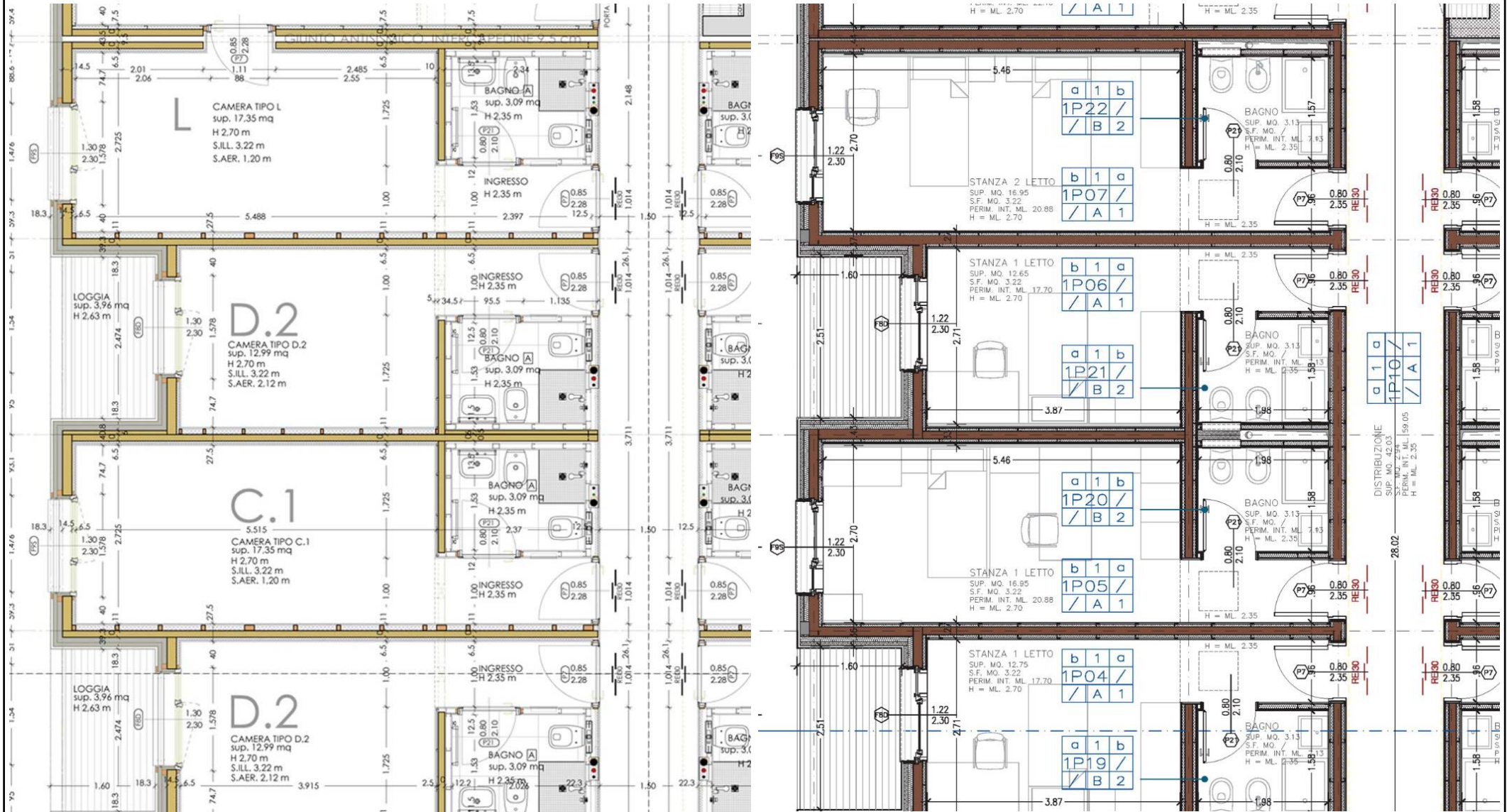
Systema di prefabbricazione a cellule tridimensionali prefabbricate "autoportanti"

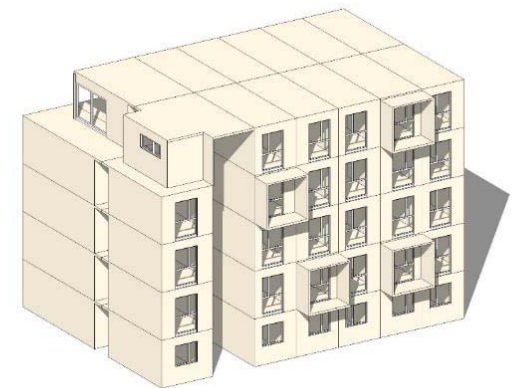
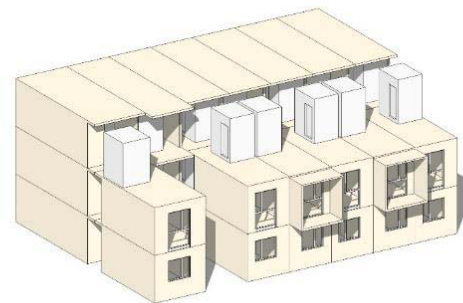
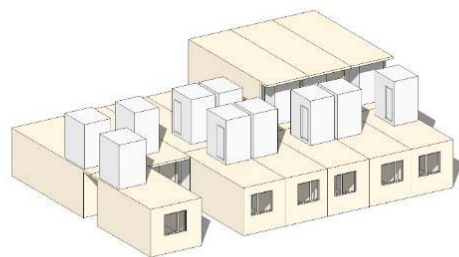
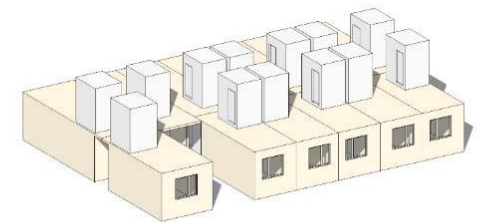
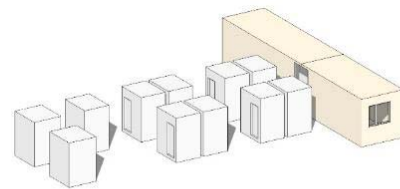
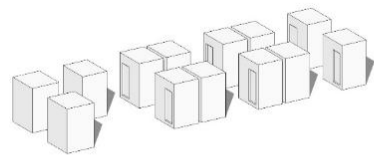
TAVOLA A1: individuazione e sequenza di montaggio delle cellule prefabbricate

PROGETTISTI
 Proprietario: Provincia Autonoma di Trento
 Architetto: TRENTO (TN) Arch. Giovanni Sull
 Architetto: TRENTO (TN) Arch. Giovanni Sull
 Architetto: TRENTO (TN) Arch. Giovanni Sull
 Architetto: TRENTO (TN) Arch. Giovanni Sull

PROGETTO
 PRELIMINARE A3.0.1.A1

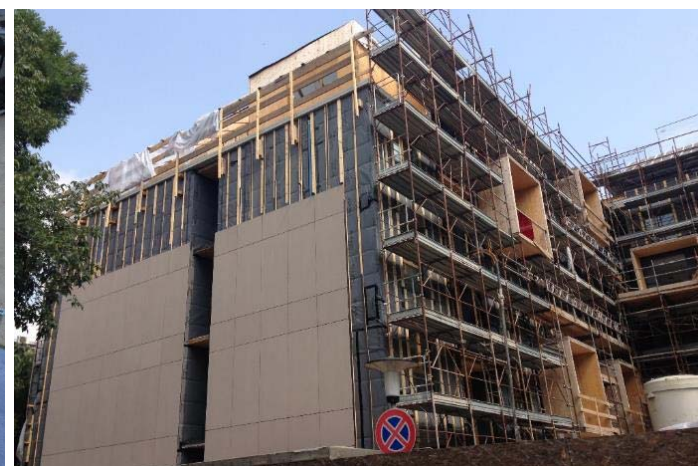
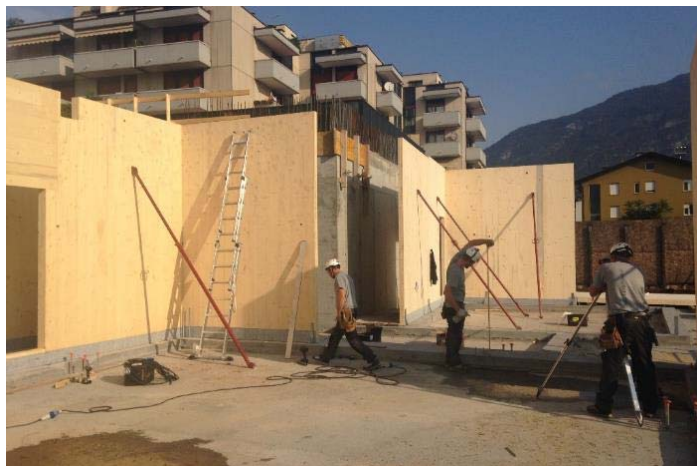
COLLINI LAVORI S.p.A.
 EDILIZIONE
 COSTRUZIONI Casaretto
 COLTNER
 LUDMAS

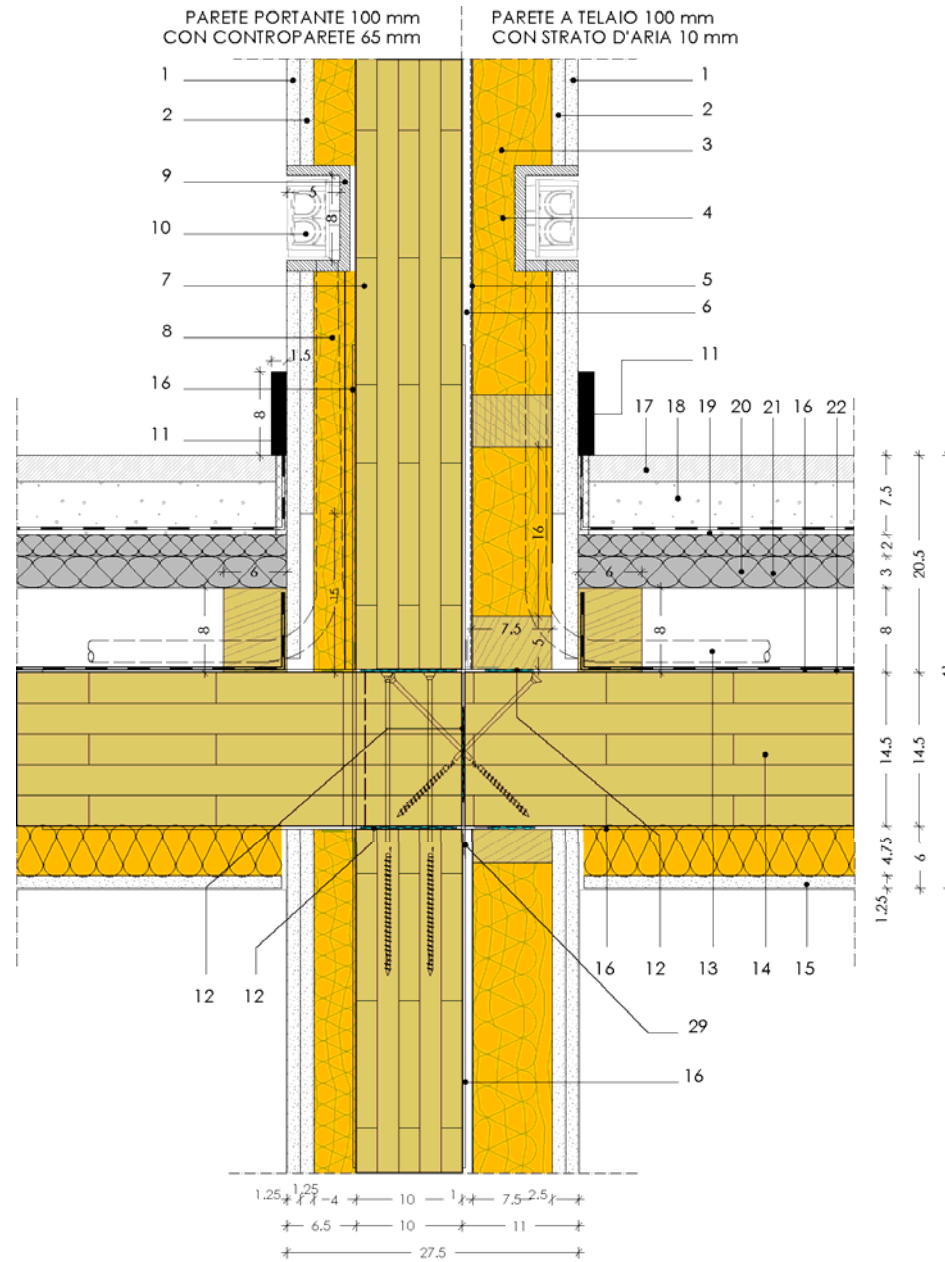


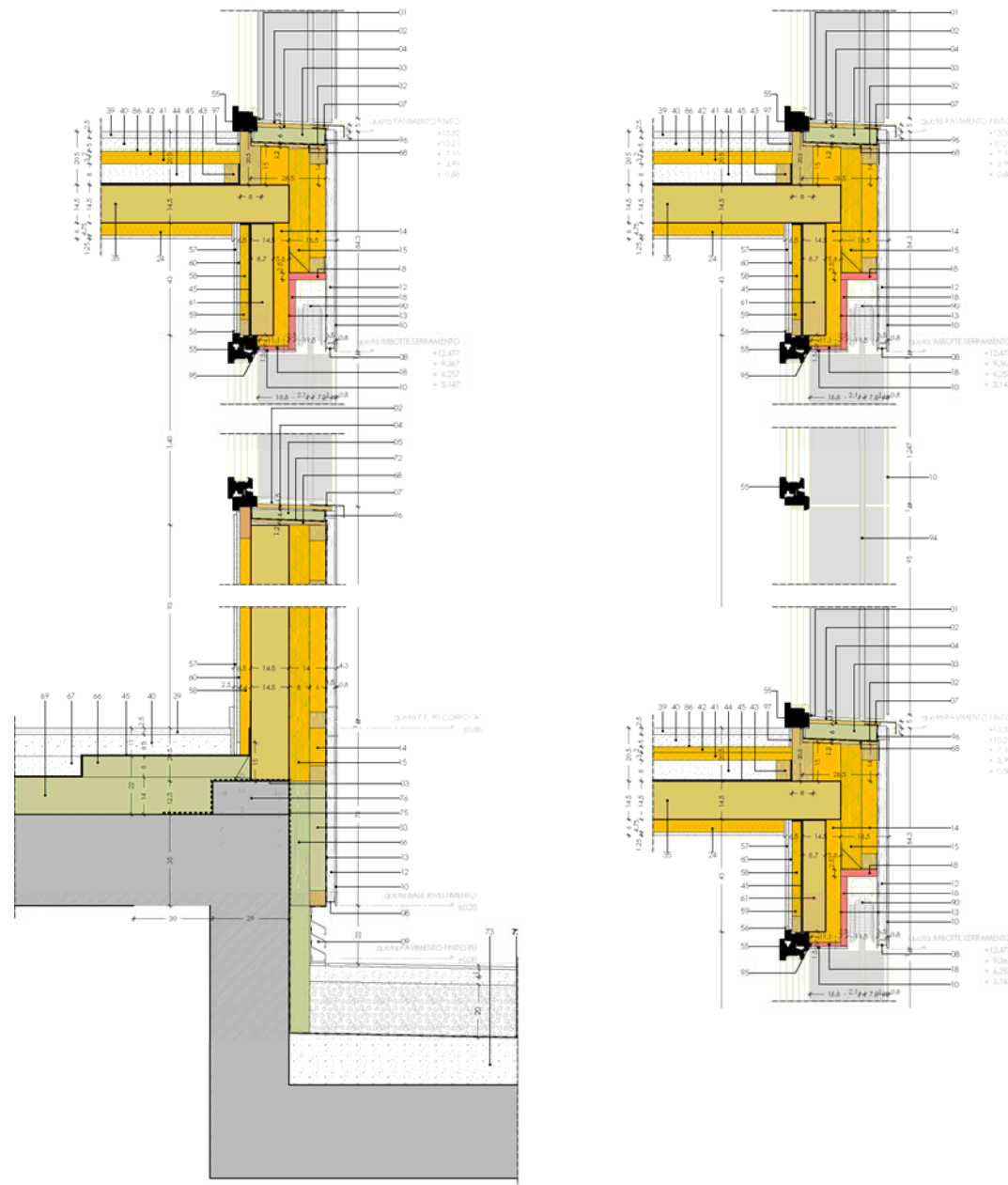


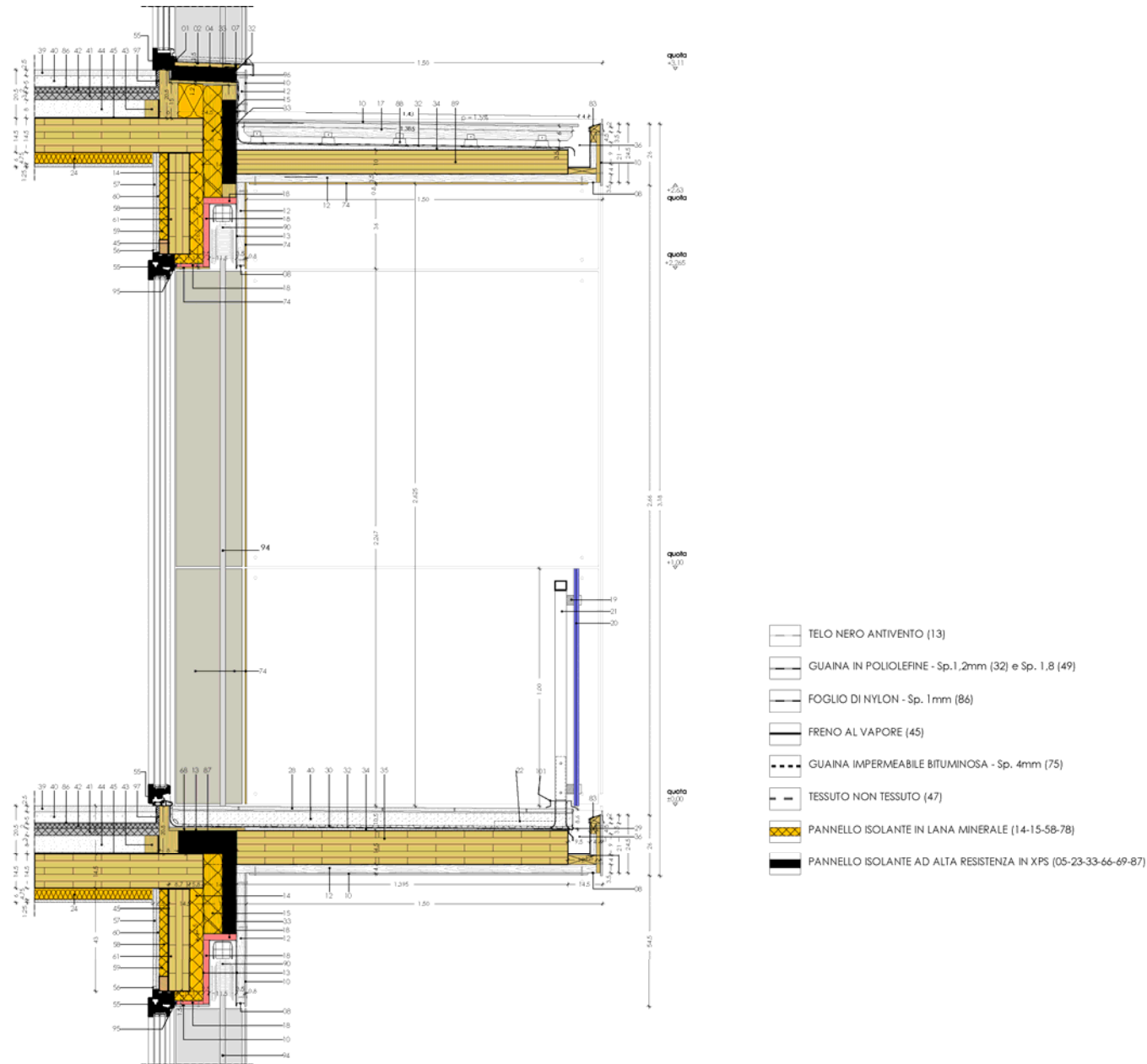


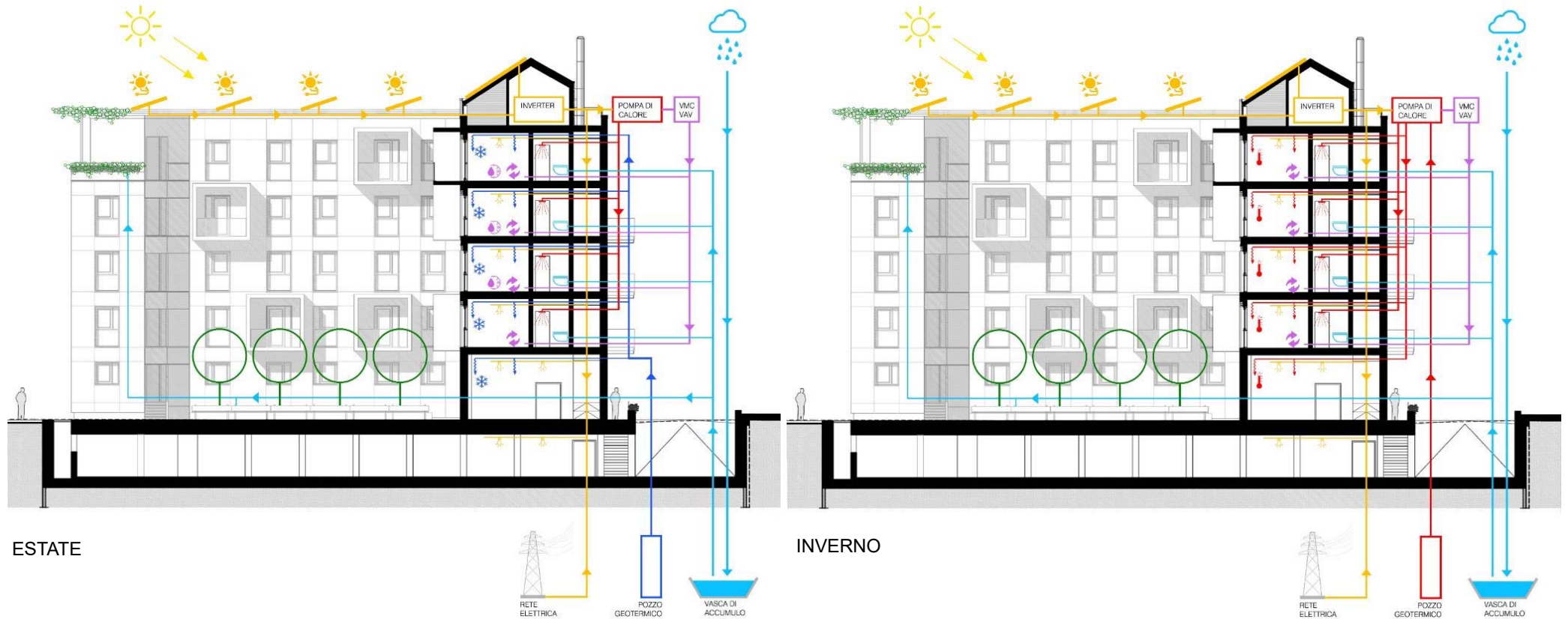












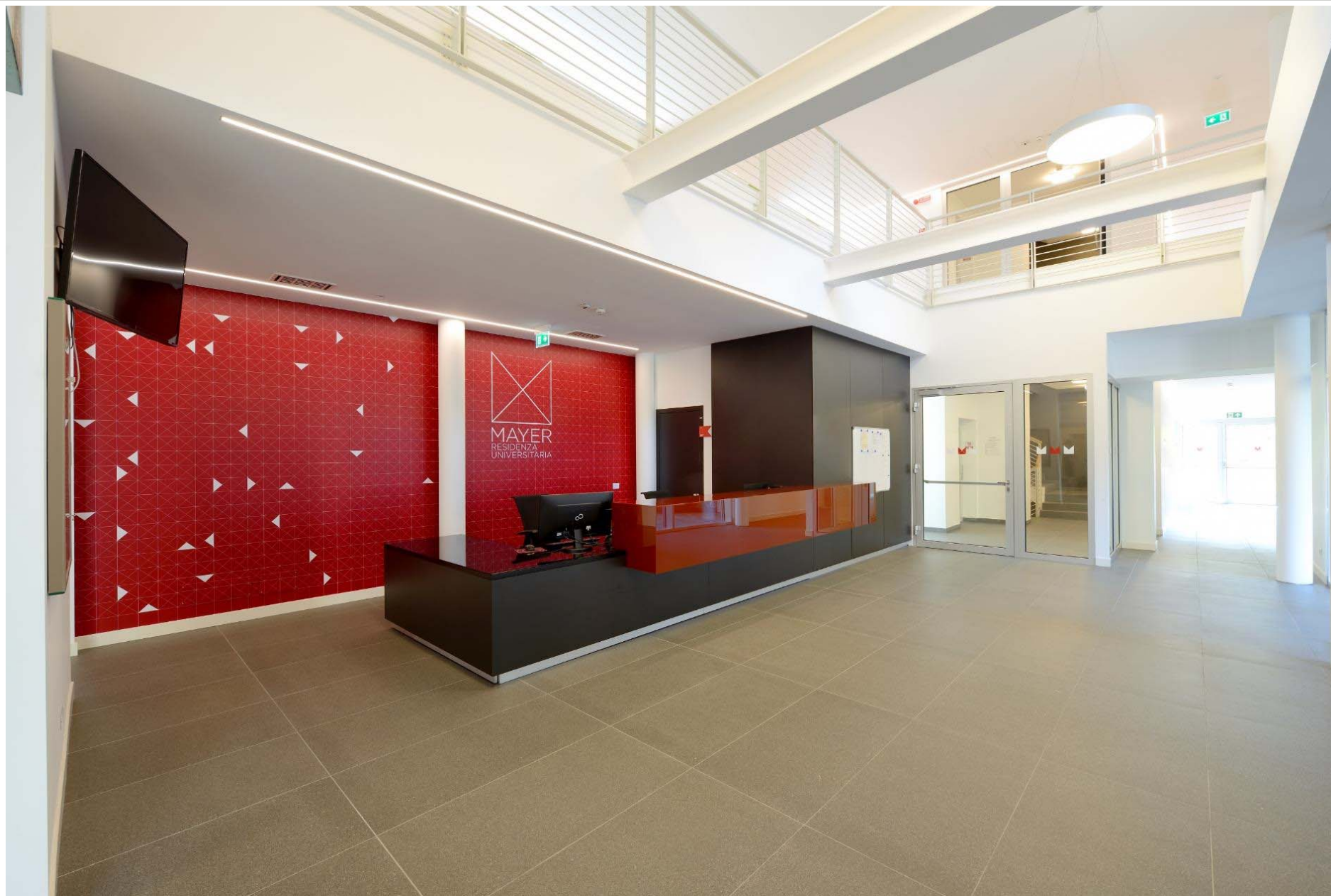


























0010299008, Trento,

Residenza Universitaria Mayer

LEED BD+C: New Construction (v2.2)

PLATINUM, AWARDED JUL 2017

SUSTAINABLE SITES		AWARDED: 14 / 14
SSc1	Site selection	1 / 1
SSc2	Development density and community connectivity	1 / 1
SSc3	Brownfield redevelopment	1 / 1
SSc4.1	Alternative transportation - public transportation access	1 / 1
SSc4.2	Alternative transportation - bicycle storage and changing rooms	1 / 1
SSc4.3	Alternative transportation - low emitting and fuel efficient vehicles	1 / 1
SSc4.4	Alternative transportation - parking capacity	1 / 1
SSc5.1	Site development - protect or restore habitat	1 / 1
SSc5.2	Site development - maximize open space	1 / 1
SSc6.1	Stormwater design - quantity control	1 / 1
SSc6.2	Stormwater design - quality control	1 / 1
SSc7.1	Heat island effect - non-roof	1 / 1
SSc7.2	Heat island effect - roof	1 / 1
SSc8	Light pollution reduction	1 / 1

WATER EFFICIENCY		AWARDED: 5 / 5
WEc1.1	Water efficient landscaping - reduce by 50%	1 / 1
WEc1.2	Water efficient landscaping - no potable water use or no irrigation	1 / 1
WEc2	Innovative wastewater technologies	1 / 1
WEc3.1	Water use reduction - 20% reduction	1 / 1
WEc3.2	Water use reduction - 30% reduction	1 / 1

ENERGY & ATMOSPHERE		AWARDED: 14 / 17
EAc1	Optimize energy performance	10 / 10
EAc2	On-site renewable energy	2 / 3
EAc3	Enhanced commissioning	0 / 1
EAc4	Enhanced refrigerant Mgmt	1 / 1
EAc5	Measurement and verification	1 / 1
EAc6	Green power	0 / 1

MATERIAL & RESOURCES		AWARDED: 7 / 13
MRc1.1	Building reuse - maintain 75% of existing walls, floors & roof	0 / 1
MRc1.2	Building reuse - maintain 95% of existing walls, floors & roof	0 / 1
MRc1.3	Building reuse - maintain 50% of interior non-structural elements	0 / 1
MRc2.1	Construction waste Mgmt - divert 50% from disposal	1 / 1
MRc2.2	Construction waste Mgmt - divert 75% from disposal	1 / 1
MRc3.1	Materials reuse - 5%	0 / 1

MATERIAL & RESOURCES		CONTINUED
MRc3.2	Materials reuse - 10%	0 / 1
MRc4.1	Recycled content - 10% (post-consumer + 1/2 pre-consumer)	2 / 1
MRc4.2	Recycled content - 20% (post-consumer + 1/2 pre-consumer)	0 / 1
MRc5.1	Regional materials - 10% extracted, processed and manufactured regionally	1 / 1
MRc5.2	Regional materials - 20% extracted, processed and manufactured regionally	1 / 1
MRc6	Rapidly renewable materials	0 / 1
MRc7	Certified wood	1 / 1

INDOOR ENVIRONMENTAL QUALITY		AWARDED: 14 / 15
EQc1	Outdoor air delivery monitoring	1 / 1
EQc2	Increased ventilation	1 / 1
EQc3.1	Construction IAQ Mgmt plan - during construction	1 / 1
EQc3.2	Construction IAQ Mgmt plan - before occupancy	1 / 1
EQc4.1	Low-emitting materials - adhesives and sealants	1 / 1
EQc4.2	Low-emitting materials - paints and coatings	1 / 1
EQc4.3	Low-emitting materials - carpet systems	1 / 1
EQc4.4	Low-emitting materials - composite wood and agrifiber products	0 / 1
EQc5	Indoor chemical and pollutant source control	1 / 1
EQc6.1	Controllability of systems - lighting	1 / 1
EQc6.2	Controllability of systems - thermal comfort	1 / 1
EQc7.1	Thermal comfort - design	1 / 1
EQc7.2	Thermal comfort - verification	1 / 1
EQc8.1	Daylight and views - daylight 75% of spaces	1 / 1
EQc8.2	Daylight and views - views for 90% of spaces	1 / 1

INNOVATION		AWARDED: 5 / 5
IDc1	Innovation in design	4 / 4
IDc2	LEED Accredited Professional	1 / 1

TOTAL 59 / 69

