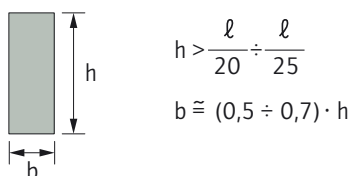
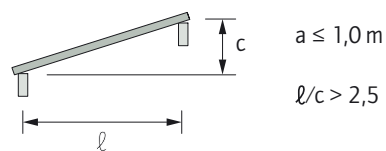
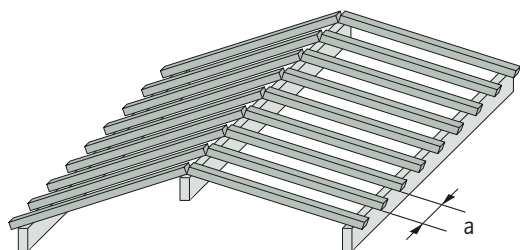
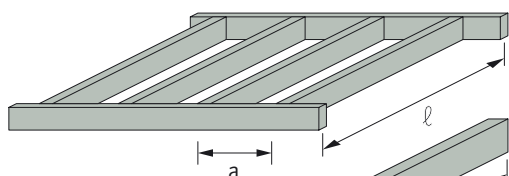


**"Falsi puntoni" della copertura di un tetto a falde con arcarecci**



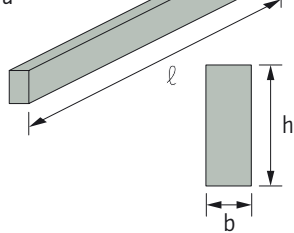
**Travatura di solaio ad uso abitazione**



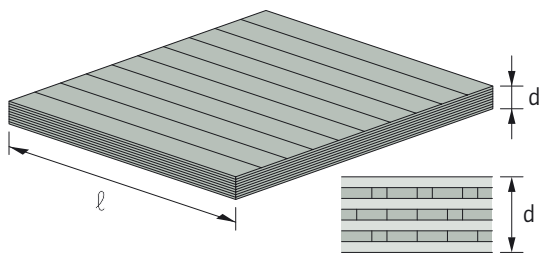
$a \leq 1,0\text{ m}$

$h > \frac{l}{18} \div \frac{l}{20}$

$b > \frac{h}{3} \div \frac{h}{2}$



**Soletta massiccia per uso abitazione e ufficio dove l è la luce massima dell'elemento considerato**



$d > \frac{l}{35} \div \frac{l}{40}$

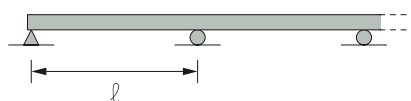
**Travi della struttura portante principale: arcarecci, capriate, portali**

**Trave semplice**



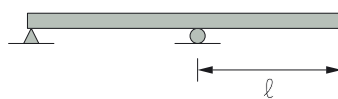
$h > \frac{l}{15} \div \frac{l}{17}$   
 $l \cong 5 - 30\text{ m}$

**Trave continua su più appoggi**



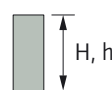
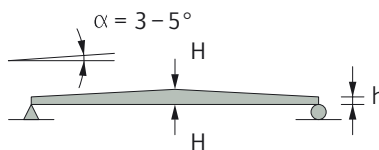
$h > \frac{l}{18} \div \frac{l}{20}$   
 $l \cong 5 - 30\text{ m}$

**Trave a sbalzo**



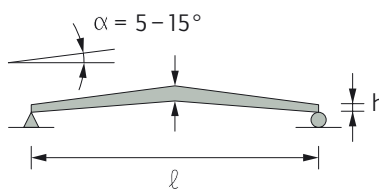
$h > \frac{l}{10}$   
 $l < 15\text{ m}$

**Trave a doppia rastremazione - trave centinata**



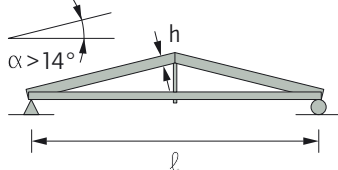
$H \cong \frac{l}{14} \div \frac{l}{16}$

$h \cong \frac{l}{25} \div \frac{l}{30}$



$l \cong 10 - 30\text{ m}$

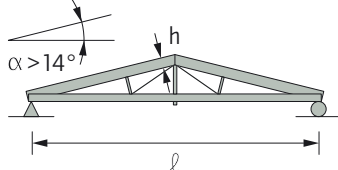
**Capriata a tre cerniere con tirante**



$h \cong \frac{l}{30}$

$l \cong 10 - 50\text{ m}$

**Capriata a tre cerniere con tirante e saette**



$h \cong \frac{l}{40}$

$l > 20\text{ m}$